



MIND MEDICINE A U S T R A L I A

A new paradigm for mental health

MIND MEDICINE AUSTRALIA (MMA) IS A CHARITY THAT SEEKS TO ALLEVIATE THE SUFFERING CAUSED BY MENTAL ILLNESS IN AUSTRALIA THROUGH EXPANDING THE TREATMENT OPTIONS AVAILABLE TO MEDICAL PRACTITIONERS AND THEIR PATIENTS. WE ARE FOCUSED ON THE DEVELOPMENT OF SAFE AND EFFECTIVE PSYCHEDELIC-ASSISTED THERAPIES TO CURE A RANGE OF MENTAL ILLNESSES.

CONTENTS

Page 3 - Testimonials from patients

Page 4 - About us

Page 6 - Theory of change

Page 7 - Key facts

Page 8 - About psychedelics

Page 10 - Medicine-assisted psychotherapy

Page 13 - Brain imaging studies and safety

Page 16 - Future research

Page 18 - Testimonials from patients

Page 19 - How you can support us

Page 20 - International Summit on Psychedelic Therapies

Page 21 - Psychological Support Services

Page 22 - Certificate in Psychedelic-Assisted Therapies

TESTIMONIALS FROM PATIENTS

Patient 1: *"I felt like I went through 15 years of psychological therapy in one night."*

Joel Harrop, Veterans of War: *"Trauma creates a prison in the mind, leaving countless Australians shackled by mental illness. While there are traditional therapies that provide a path to peace for some, scores languish in suffering. I believe psychedelic therapy, responsibly administered in a safe and supported environment, is the key to unlocking those prison doors."*

"Lest we forget" is a powerfully iconic statement steeped in tradition and honour. Yet, the nation does forget, every day, about those veterans who put their lives on the line for their country, only to be classified "treatment resistant" as they struggle to cope with the scars of war. Did you know 8% of Australian veterans in the year after discharge develop a full suicide plan? I was one of them. My personal journey is a fall from grace, followed by healing and redemption.

After honourably discharging from Army in 2008 as an Officer, I went on to be the State Party Secretary of Australia's largest political party, riding high on the tide of success as the scars of war seeped silently through the cracks. I could not run from my trauma for long. Ultimately, I became homeless, alone, attempting suicide, masking my pain in destructive fashion. My clinical diagnosis was PTSD, major depressive disorder with anxiety and substance abuse disorder. I was treatment resistant and the Department of Veterans Affairs wrote me off as a lost cause.

In desperation, from a place of abject hopelessness, I turned to safe and supported Ayahuasca psychedelic therapy. One week of intensive treatment provided transformational healing. I'm honoured to be an example of what is possible with guided psychedelic therapy, and it is my passion to help my brothers and sisters in arms find their own healing journey."

Tom Judd, Director, sharkeatsbear: *"As a fairly new person to psychedelics, when I discovered the power of LSD and psilocybin, it was as if something had awoken inside of me. My many years of battling chronic depression, anxiety and Complex PTSD, suddenly felt like it was coming to an end. My mind felt "defragged" and organised. I problem-solved strategies of how to change negative aspects of my life and I felt free to explore new things that would otherwise give me anxiety. It's not so much a drug, as it is a medicine."*

ABOUT US

What is Mind Medicine Australia?

Mind Medicine Australia (MMA) is a charity that seeks to alleviate the suffering caused by mental illness in Australia through expanding the treatment options available to medical practitioners and their patients. We are focused on the development of safe and effective psychedelic-assisted therapies to cure a range of mental illnesses. Mind Medicine Australia is a registered charity founded by Tania de Jong AM and Peter Hunt AM.



TANIA DE JONG AM

Founder Creative Universe,
Creativity Australia, Creative
Innovation Global and Mind
Medicine Australia



PETER HUNT AM

Investment Banker & Engaged
Philanthropist; Founder
Women's Community Shelters
and Mind Medicine Australia

Why was Mind Medicine Australia launched?

Mind Medicine Australia was established to support research into and enhance the effectiveness and safety of, medicine-assisted psychotherapies, while reducing unnecessary delays in implementing this approach within Australia. One in five Australians are currently suffering from a mental illness. One in two Australians will be affected by a mental illness in their lifetime. Australia is experiencing a growing mental health crisis that current treatment options are unable to adequately address. While available mental health treatments can be effective, more than half of all patients do not respond.

Therefore, we need to support the most effective and innovative treatments to address these cases. Over the past decade, medicinal psilocybin and medicinal MDMA-assisted psychotherapies have demonstrated remarkably promising clinical results in overseas trials. Mind Medicine Australia believes Australia should join the global effort to investigate and optimise these treatment approaches for mental illness. **Read more about the state of mental health [here](#).**

What do you hope to achieve?

MMA operates as a collaborative network that connects medical practitioners, consumers, academia, government, industry, regulatory bodies, philanthropists, investors and other stakeholders. Subject to the results from Phase 3 clinical trials, currently underway overseas, we are preparing to assist the health care system for possible regulatory changes in Australia, by supporting clinical research and developing a clinical implementation framework and therapist training protocols. We are also educating and engaging relevant stakeholder groups and the general public to increase awareness and to drive best practice.

Why medicine-assisted psychotherapies?

In major international trials, medicine-assisted psychotherapies have shown impressive outcomes in treating a range of mental illnesses with greater effectiveness than standard treatments, and with an excellent safety profile. Australia is currently behind the US, UK, Canada, Israel and Europe when it comes to research and regulatory support for these promising treatments. Read a literature review by Dr. Martin Williams [here](#).

What are MMA's plans for research?

Mind Medicine Australia supports research that investigates the benefits, mechanisms and risks of medicine-assisted psychotherapies. We are particularly interested in novel research protocols that expand on research conducted by major universities overseas, and that seek to answer key questions to enhance clinical effectiveness and safety.

What policy change is MMA advocating for?

We advocate for evidence-based policy that supports research and appropriate service provision for the therapeutic use of psychedelics alongside psychotherapy. Mind Medicine Australia is focused specifically on the clinical application of medicinal psilocybin and medicinal MDMA for certain mental illnesses. Our primary focus is the support of policies that will result in substantial improvement in mental health treatment outcomes for Australians (remission & response rates). Subject to continued supporting results from clinical trials, Mind Medicine Australia advocates for policies that will enable access to evidence-based medicine-assisted psychotherapies in a manner that is accessible and affordable to all Australians in need.

THEORY OF CHANGE

Motivated by the potential for “breakthrough therapies” to expand the medical treatment options for mental illness in Australia and beyond, Mind Medicine Australia seeks to:

- **Increase awareness and support** among the general public and key stakeholders for psilocybin and MDMA-assisted psychotherapy.
- **Guide regulatory change** regarding medicinal psilocybin and medicinal MDMA through constructive engagement with policy makers and regulators.
- **Provide training and professional development** for therapists and clinicians to make use of these medicines.
- **Fund research studies** (clinical and sociological) to measure and improve the effectiveness of breakthrough therapies.
- **Ensure implementation feasibility**, including the reliable procurement, importation, and storage of medicines.



Such that these breakthrough therapies are:

- **Safe** - legal under federal and state law; carefully regulated by all relevant authorities.
- **Accessible** - medical-grade product is available throughout the country; therapies are financially affordable for ordinary Australians; medical practitioners are willing and able to prescribe for relevant patients.
- **Effective** - clinicians are trained/certified to administer therapies; those suffering from mental ill-health are open to the potential for such therapies to assist them; ongoing research studies are being performed.



In order that:

There is a **significant reduction in the level of mental ill-health** in Australia.

The Statistics Need to Change



Massive scale of mental illness in Australia – and getting worse

- 1 in 5 adults with chronic mental illness
- 1 in 8 on antidepressants/1 in 4 older people/1 in 30 children (18% increase in 5 years, 95% in 15 years)
- Over 45% of Australians will experience a mental illness in their lifetime

Common mental illnesses are depression, post-traumatic stress disorder and anxiety disorders.

Current Treatments

- **Depression:** Only 35% of sufferers experience **remission** from pharmacotherapy (anti-depressants) and/or psychotherapy
- **PTSD:** Only 20-30% of sufferers show some **response** to pharmacotherapy and only about 50% respond to any treatments. **Remission** rates are as low as 5%

A “more of the same” approach is not going to solve the problem.

A New Paradigm for the Future



Both psilocybin-assisted psychotherapy for major and treatment resistant depression, as well as MDMA-assisted psychotherapy for PTSD have been granted “**Breakthrough Therapy Designation**” by the Food and Drug Administration (FDA) in the United States to fast-track the approval process. **Very safe in a medically controlled environment, non-addictive** and no increase in risk for mental illness. The psychedelic-assisted therapy sector is estimated to be valued at up to \$US200B in the future.

Backed by International Clinical Research

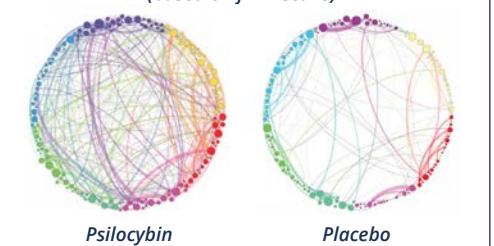
Remarkable clinical results for an increasing number of treatment indications including depression, PTSD, end-of-life anxiety, OCD, anorexia, addiction and dementia. Over 150+ current or completed trials.

Most effective treatments for mental illness show effect sizes using the Cohen’s D scale of around $d=0.5$ (0.2=‘small’; 0.5=‘medium’; 0.8=‘large’ treatment benefit)

Antidepressants (SSRI’s) for depression: $d=0.3$
 Psilocybin for depression: $d=2.0-3.1$
 Psilocybin for end-of-life distress: $d=0.8-1.6$
 Psilocybin for alcoholism: $d=1.2-1.4$
 MDMA for PTSD: $d=1.17-1.24$

Psilocybin and MDMA-assisted therapies are showing remission rates of 60-80% after just 2-3 doses for complex mental health disorders.

*Increased communication between brain networks
(based on fMRI scans)*



Source: The Royal Society, Nature Reviews Neuroscience 10, 186–198

Mind Medicine Australia

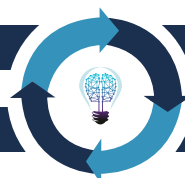
Our mission is to expand the treatment paradigm in Australia for mental illness, by developing the ecosystem for effective, evidence-based treatments, for all Australians.

Awareness and Knowledge Building

International Summit November 2021

Access to New Medically Approved Therapies

Development of Regulatory & Patient Access Pathways



Therapist and Clinician Education

Professional Development Programs

Asia-Pacific Centre for Emerging Mental Health Therapies

Applied Research & Prototype Clinic

ABOUT PSYCHEDELICS

Psychedelics are chemical compounds which temporarily create changes in brain function including shifts in perception, thinking and feeling, which produces an 'altered state of consciousness'. The word psychedelic was coined by British psychiatrist Humphry Osmond, and means 'mind revealing'. The 'classical psychedelics' include substances like psilocybin (found in a variety of mushrooms), ayahuasca, mescaline, lysergic acid diethylamide (LSD) and dimethyltryptamine (DMT). Although not a classical psychedelic, MDMA is often included in this category due to some similarities in its effects and related clinical applications. Classical psychedelics appear to produce many of their effects through the activation of a specific serotonin receptor (5HT_{2A}), a receptor which research from Imperial College London has linked to enhancing openness and promoting a form of "active coping" in the brain.



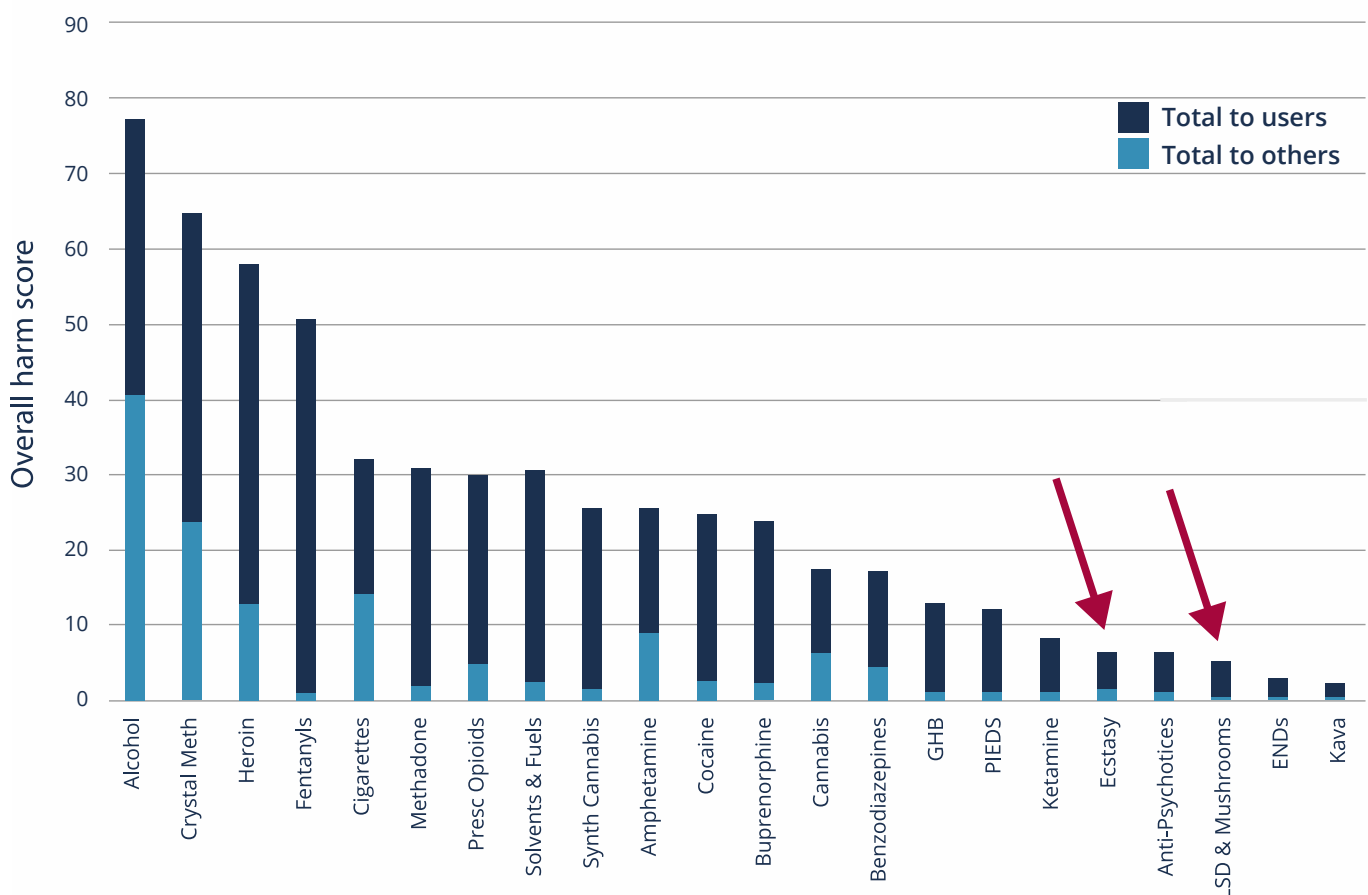
For how long have psychedelics been in use?

Historians and anthropologists have found that psychedelic agents have been utilised for thousands of years and in various contexts, from the medicinal to the ritualistic. The historical use of psychedelics in the West traces back to Ancient Greece's Eleusinian Mysteries, a ritualised initiation rite involving what anthropologists believe was a psychedelic drink, 'kykeon'. MDMA was first synthesised in 1912 by the German pharmaceutical company Merck, and LSD was first synthesised in 1938 by the Swiss chemist Albert Hofmann at Sandoz Laboratories. Hofmann also isolated psilocybin for the first time in 1957. In the 1950s, medicine-assisted psychotherapy was regarded by a large proportion of psychiatry as the next big breakthrough for treating mental illness, and was used for a range of conditions in tens of thousands of patients. Thousands of research papers were published on psychedelic therapy between 1950-1972. These documented their application as treatments for depression, anxiety, post-traumatic stress disorder (PTSD) and alcohol dependence.

Why were these substances scheduled alongside drugs like heroin and crack cocaine? How did they get such a bad name?

Psychedelics were scheduled for predominantly political reasons. These centred on former US President Nixon's 'War on Drugs', which was used to suppress the anti-Vietnam war movement. Classical psychedelics and MDMA are currently Schedule 9 drugs in Australia (Schedule 1 in the USA). This category is reserved for substances considered by regulators to be without medical value, and with high abuse potential. Extensive research has shown that psychedelics do not meet either of these criteria. In addition to unjustified scheduling that has had a global impact through various international treaties, government funding and ethics committee support for research was completely stopped. Given that medicine-assisted psychotherapies were establishing themselves through the 1950s and 1960s as the 'next big thing' in psychiatry, this censoring of inquiry into such a promising line of research is unprecedented in the modern world. Former US officials within the Nixon administration have since admitted that their scheduling of psychedelics and certain other compounds was an attempt to suppress parts of society that posed a challenge to their world-view and political agenda.

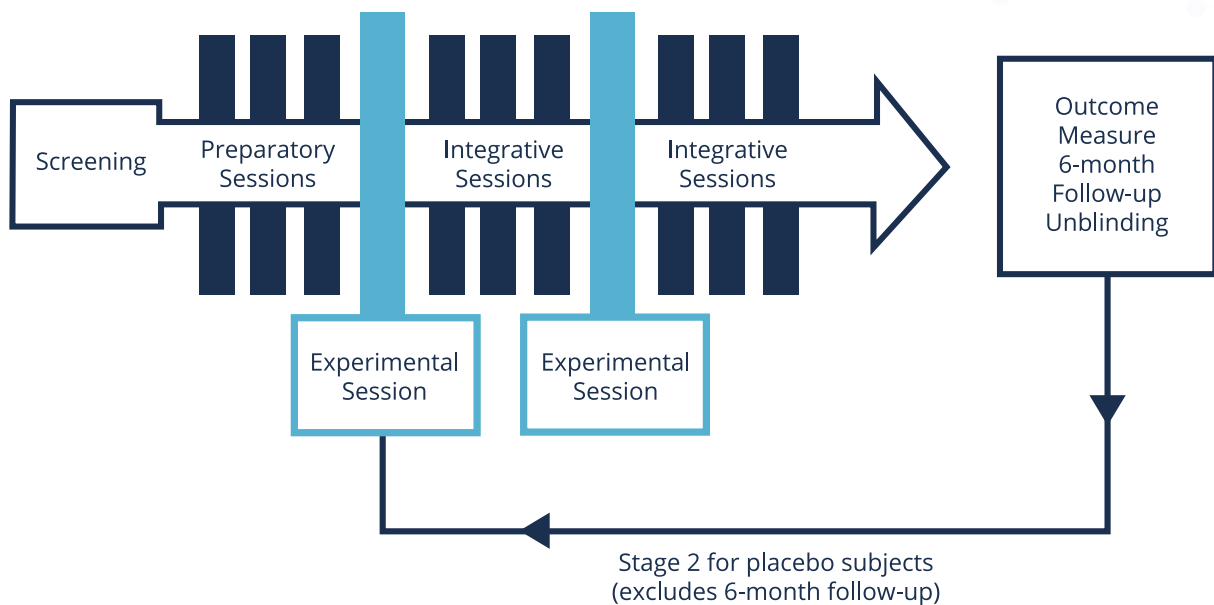
HARM TO USER VS HARM TO OTHERS



Source: Nutt, D and Castle, D, et al. (2019) *The Australian drug harms ranking study*, *Journal of Psychopharmacology*, Vol 33, Issue 7

MEDICINE-ASSISTED PSYCHOTHERAPIES

Medicine-assisted psychotherapies involve ‘talk-therapy’ alongside the ingestion of a psychedelic compound such as medicinal psilocybin, or medicinal MDMA. Researchers and clinicians often describe three distinct therapy phases that take place over several days: preparation, the psychedelic experience and integration. Importantly, the non-psychedelic elements of this approach are essential for both effectiveness and safety.



What is the evidence for their effectiveness?

Internationally, there has been a resurgence of research into psychedelics at universities such as Harvard, Johns Hopkins, New York University, Stanford, Imperial College London, and the University of Zurich. Several well-controlled clinical trials have yielded promising results. The new data show that medicine-assisted psychotherapies frequently lead to remission from certain mental illnesses within a few doses, when administered with proper psychotherapeutic support before, during and after treatments. The proportion of participants who show positive clinical improvements, and the degree to which they improve, are substantially higher than clinical outcomes associated with currently available treatments. Psilocybin-assisted psychotherapy can lead to remission in 60-80% of cases of anxiety and depression, whereas current existing treatments lead to remission in a maximum of 35-42% of cases. [Read a literature review by our Scientific Officer here.](#)



Are there advantages to medicine-assisted psychotherapies over other treatments?

Research over the past decade shows that with medicine-assisted psychotherapies, patients frequently experience a reduction in symptoms within a few sessions, with little in the way of side-effects. This is a striking difference from traditional pharmacotherapy, such as with anti-depressants, where patients take medication daily for months, years, or indefinitely, and typically experience unpleasant or problematic side effects.

In terms of 'talk therapy', the time and financial commitment for ongoing treatment can be a barrier for many. More critically, only about half of patients respond to the drug and talk therapies in use today, with a majority of responders continuing to experience sub-diagnostic symptoms during and post-treatment, and high relapse rates.

Medicine-assisted psychotherapies have achieved substantially better clinical outcomes than the available talk and drug therapies, with far fewer 'therapeutic doses' required to achieve robust outcomes. Also, they are generally free from unpleasant or problematic side effects. Further work is needed to investigate how, and to what degree, clinical outcomes can be sustained following medicine-assisted psychotherapy; longer-term data from early studies suggest the outcomes might be sustained longer than available treatments, with avenues to explore to further sustain the change.

How effective are psychedelics compared with current treatments?

Current drug and talk therapies for depression and anxiety respond in 35-42% of cases, with high rates of sub-diagnostic symptoms and relapse. In a trial involving participants who had failed to respond to several different drug and talk therapies, psilocybin-assisted therapy substantially reduced depressive symptoms in over 65% of these ‘treatment-resistant’ patients.

In a trial using psilocybin-assisted psychotherapy for smoking cessation, 80% of patients had quit smoking six months after the therapeutic sessions, and after one year, that figure was still at 67%. Typically, the current “gold-standard” smoking cessation treatments with similarly addicted participants can hope to achieve around a 20% quit rate at follow-up.

PTSD is notoriously hard to treat, with current anti-depressant pharmacotherapy achieving relief from symptoms in about 20% of sufferers. In recent trials, MDMA-assisted therapy led to remission in 67% of PTSD patients who had not previously responded to standard treatments for an average of 18 years. These trials have informed the current Phase 3 clinical trials, and the FDA’s decision to designate MDMA and psilocybin as “Breakthrough Therapies”, expediting research and the transition to prescription medicine.

How do psychedelics work?

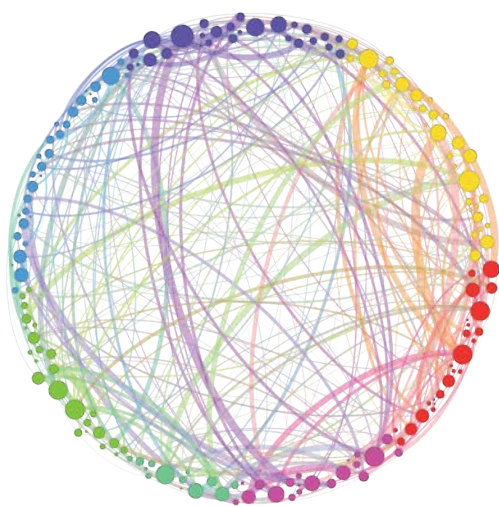
A number of theories have been put forward to account for the therapeutic effects of psychedelics. The most prominent theories are based on recent brain imaging data. One way in which classical psychedelics may help with issues like depressive, addictive, and obsessive disorders is by allowing the brain and mind to ‘break out’ of repetitive and rigid styles of thinking, feeling and behaving. Psychedelics temporarily alter activity and increase connectivity between novel neural networks within the brain, breaking patients out of pathological patterns of thought and habit. Psychedelics primarily activate the 5HT_{2a} receptor in the brain. Recent research suggests that this receptor aids adaptivity through enhancing sensitivity to context, learning and unlearning, cognitive flexibility and synaptogenesis (new neuronal connections).

What do psychedelics do?

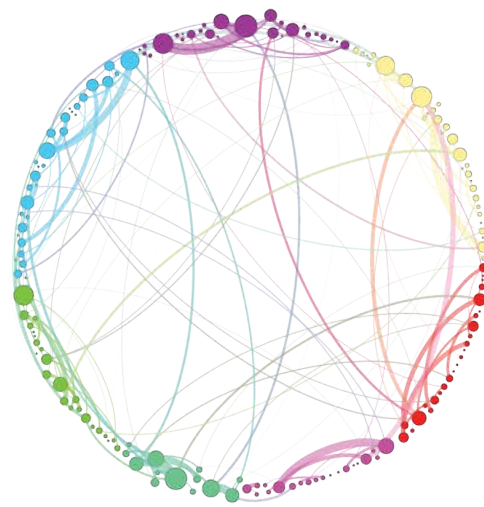
In a therapeutic setting, psychedelics frequently produce profound personal or existential insights, feelings of empathy and self-compassion, and a sense of connection or unity with other people, things and the world in general. Research shows that these characteristics are correlated to therapeutic outcomes and that patients regard these experiences among the most meaningful of their lives. In clinical settings, medicine-assisted-therapies create a fertile ground for change and for restoring patient agency.

What do brain imaging studies tell us about psychedelics?

Brain imaging studies have opened a window into the mechanisms of medicine-assisted psychotherapies and the study of consciousness itself. Psychedelics reduce the activity of a 'hub' structure in the brain called the Default Mode Network (DMN). The DMN is associated with rumination about the past, daydreaming and autobiography - our 'self-story', which can become distorted and overactive in mental illness. By temporarily decreasing the activity of the DMN, psychedelics appear to enable communication among more diverse brain regions, and possibly facilitate an opportunity to break free from dysfunctional beliefs and mental 'ruts'. The below images show increased communication between brain networks (based on fMRI scans):



Psilocybin



Placebo

Source: The Royal Society, Nature Reviews Neuroscience 10, 186–198

How safe are these medicines/therapies?

Overall psychedelics have a good safety profile in both clinical trials and even in population use. There is negligible physiological toxicity or abuse potential, and little in the way of side-effects for eligible participants in trials. While the therapy can be challenging and bring up difficult experiences, these may be crucial to the therapeutic process; the majority of participants rate the experience as among the top five most significant of their lives. While the psychological risks are increasingly better understood and mitigated, fine attention to psychological support and a controlled clinical context is vital. Anxiety during the experience can be ameliorated with careful preparation by the individual and therapist as well as support during the active session. The use of medical monitoring is also recommended, albeit in over 119 clinical trials thus far, there has been only one slight increase in heart rate as a physical side effect associated with MDMA.

How does MDMA work?

MDMA is known for increasing feelings of trust and compassion whilst decreasing fear and defensiveness, which makes it easier for patients to be able to revisit their traumatic memories without debilitating anxiety, and to address them in various ways. MDMA-assisted psychotherapy increases a sense of safety and self-compassion, whilst decreasing avoidance and defensiveness, allowing patients to revisit traumatic memories without producing re-traumatisation. MDMA has also been shown to decrease the reactivity of the amygdala, reducing the experience of fear associated with traumatic memory, allowing the processing of adverse events in psychotherapy.

Is MDMA the same thing as the street drug Ecstasy?

MDMA is not the same as "Ecstasy". Substances sold on the street may contain MDMA, but frequently also contain unknown adulterants. In clinical studies, pure MDMA has been shown to be safe for human consumption when taken at therapeutic doses.

"It does not seem to be an exaggeration to say that psychedelics, used responsibly and with proper caution, would be for psychiatry what the microscope is for biology and medicine or the telescope is for astronomy."

Dr. Stanislav Grof

I've heard that psychedelics can induce psychosis or can result in frightening experiences.

While psychedelics are powerful substances, and can produce challenging experiences without appropriate support, there is no evidence that psychedelic use is linked to either mental illness or negative health outcomes. A meta-analysis published in the premier journal Nature found no link between psychedelic use (not within a clinical context) and psychosis across a cohort of 135,000 people. The researchers found that individuals who had taken psychedelics were not at increased risk of developing 11 indicators of mental-health problems, including: schizophrenia, psychosis, depression, anxiety disorders and suicide attempts. In contrast, it was found that lifetime psychedelic use was associated with decreased suicide risk and improved wellbeing. For patients with psychosis risk or complex personality disorders, medicine-assisted psychotherapies may involve complications, and is currently not recommended –further research is needed to determine the degree to which safety concerns are warranted. As a matter of caution, patients with these conditions are typically excluded from clinical trials of medicine-assisted psychotherapies.

Which mental illnesses are helped by psychedelics - based on recent studies?

So far, psilocybin-assisted psychotherapy has shown great promise in the treatment of depression, anxiety and addiction in well-controlled Phase 2 clinical trials, with some evidence for successfully treating Obsessive Compulsive Disorder. New trials are underway for Dementia and Anorexia Nervosa. MDMA-assisted psychotherapy has been successfully used to treat PTSD and addiction; early clinical data also suggests an application for social anxiety in autistic adults.

What other conditions could psychedelics assist with?

It has been suggested that psychedelics are most helpful in conditions characterised by rigid thoughts and behaviours such as depression, anxiety, addiction, OCD and eating disorders. They may also prove to be helpful with pain relief, immune function and learning disorders. Recently, the Psychedelic Research Centre at Imperial College has suggested investigating psychedelics for use in 'disorders of consciousness' including acquired brain injury, vegetative states and minimally conscious states. MDMA was originally used in couples' therapy and for conflict resolution, for which it offers great promise.

When will this therapy be available?

Psilocybin and MDMA have been granted 'Breakthrough Therapy' status by the US Food and Drug Administration (FDA), expediting their transition to prescription medicines subject to positive outcomes within current trials. Critical data are expected to be released within the next year from Phase 2b and Phase 3 trials for psilocybin and MDMA respectively. If these confirm the treatments to be effective, MDMA for the treatment of PTSD may become available as early as 2021 in the US and psilocybin for the treatment of depression within a couple of years in some countries. MDMA has recently been approved for advanced access (Compassionate Use) in Israel, Switzerland and the USA for patients who do not have other treatment options.

What is Mind Medicine Australia's Professional Development program?

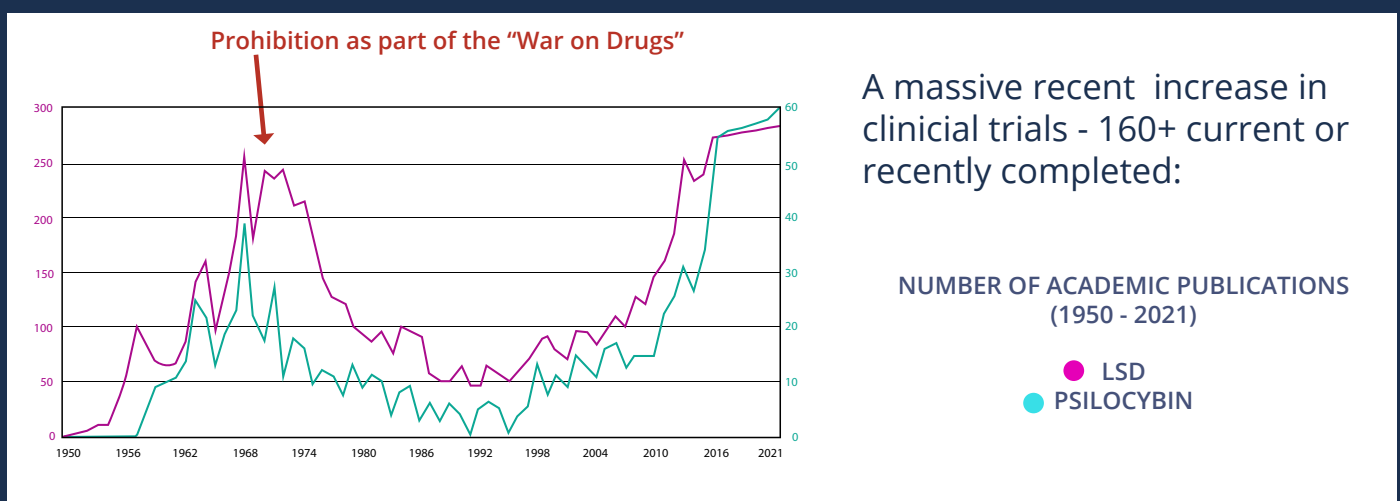
Knowledge, training and certification will be essential to ensure best practice for medicine-assisted psychotherapies. In partnership with leading organisations overseas and locally, we are establishing a Certificate in Psychedelic-Assisted Therapies (CPAT) program to support the integration of this novel approach into the Australian mental health service sector. The Mind Medicine Australia CPAT will give qualified clinicians the additional skills and awareness they need in order to safely and successfully facilitate medicine-assisted psychotherapies. Instruction will focus on a standardized approach to medicine-assisted psychotherapies that can be integrated with clinicians' existing psychotherapeutic experience and training. The CPAT will include a mix of face-to-face and online learning components.

What research is there still to do?

While medicine-assisted psychotherapies have shown some strong clinical results, considerable research is still required to confirm the benefits, ensure best practice and optimise clinical effectiveness. Several large multi-site international 'Phase 3' trials of both psilocybin and MDMA will determine whether the promising results seen to date will hold up in larger, and more realistic, clinical settings.

While classical psychedelics pose negligible toxicity or dependence risks, psychological risks need to be better understood and mitigated. To date, research trials have done well to select appropriate participants and conduct trials in such a way as to produce impressive levels of safety. However, in order to offer these therapies to a much larger proportion of the population, more work is needed to understand psychological risks and how to maintain the currently low levels of adverse events.

More research into the 'therapeutic mechanisms' of this approach is essential in order to optimise the effective aspects of the therapy, to understand why some people do not respond clinically, to determine what works best for different mental health conditions, and to prolong the positive change.



Medicine	No. Trials	Focus
MDMA	94	PTSD, addiction, social anxiety, mood disorders
Psilocybin	76	Depression, OCD, eating disorders, migraines, addiction
LSD	16	Depression, anxiety, existential anxiety, cluster headache
Ibogaine	3	Addiction
Ayahuasca	2	Depression

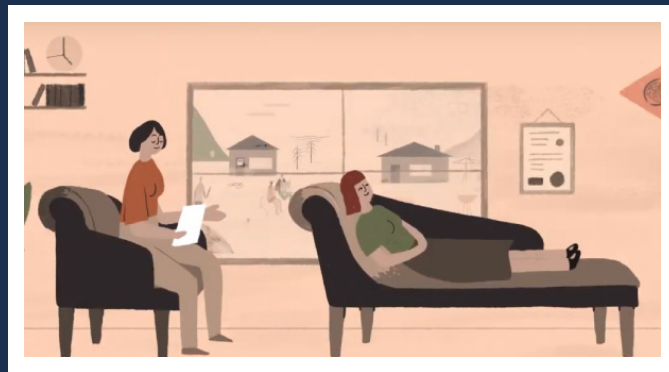
TESTIMONIALS FROM PATIENTS

Testimonials from patients in the first study of safety and tolerability of MDMA-assisted therapy in patients with alcohol use disorder: preliminary data (UK 2019) and other participants.

Patient's perspective

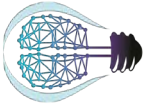
Participant 1: *It's not about the drinking, the MDMA healed me inside and the drinking looks after itself... I'm seeing things anew, nature for the first time... I'm in control of my decisions, I've got control back... Life is just good!*

Participant 2: *Better than other treatments, including inpatient detox... I enjoyed every moment of it. Thrilled to be part of the study... I feel energised... The treatment has worked for me, done me a lot of good. I've got a lot of confidence out of it. I'm calmer... It's given me what I wanted; to be cured, to not have the cravings, to look at life differently. I'm not so angry at everything ... Being under MDMA was beautiful. It showed me the real me; the me without alcohol.*



Participant 3: *A weight has been lifted off my shoulders. I haven't felt like that for a long time. There are no nagging doubts. I'm getting my life back on track... Everything is so much clearer. It's like a smog has been removed. I can see myself moving forward... It makes me think: why was I drinking that rubbish? I was just being stupid, idiotic, killing myself. There's no reason to be doing that... Taking part in this study has helped me focus more on life and my goals... An uplifting experience that I would recommend to anyone.*

Participant 4: *I am so inspired by the potential use of these substances and very excited to help. I have made a promise to myself to help change the standard view after obtaining a deep understanding recently of psychedelics. I find it morally wrong that we don't have easy access to such useful and life affirming tools in our society and want to help effect change. My husband and I have had incredible healing experiences with it, as has our 20 year old son, but are frustrated that we have to travel overseas to legally make use of such helpful medicines. Whatever I can do to help on a practical level with time and energy then count me in!*



MIND MEDICINE AUSTRALIA

Psychedelic Medicine Scheduling

Medicine	UN Status	Australia Status	US Status	NZ Status	Canada Status	England Status
Ayahuasca	Not individually controlled	Not individually scheduled	Not individually controlled	Not individually controlled	Not individually scheduled	Not individually controlled
DMT	Schedule I	Schedule 9	Schedule I	Class A controlled medicine	Schedule III	Schedule 1
Ibogaine	Uncontrolled	Schedule 4	Schedule I	Prescription	Schedule I	Prohibited but not individually controlled
Ketamine	Uncontrolled	Schedule 8	Schedule III	Class C4 controlled medicine / prescription Medicine	Schedule I	Schedule 2
LSD	Schedule I	Schedule 9	Schedule I	Class A controlled medicine	Schedule III	Schedule 1
MDMA	Schedule I	Schedule 9	Schedule I	Class B1 controlled medicine	Schedule I	Schedule 1
Mescaline	Schedule I	Schedule 9	Schedule I	Class A controlled medicine	Schedule III	Schedule 1
Psilocybin	Schedule I	Schedule 9	Schedule I	Class A controlled medicine	Schedule III	Schedule 1

HOW YOU CAN SUPPORT US

We are a small organisation doing big things. We rely on support from our partners and the community. You can help to support research and the development of medicine-assisted psychotherapies in the following ways:



- Donate to Mind Medicine Australia to Support Psychedelic Research, Public Education and Future Therapist Training.

- Volunteer in-kind support, products and services.

- Sharing our 1 page Mind Medicine Australia fact sheet with key facts and figures about the state of mental health in Australia and Mind Medicine Australia.

- Sharing our 2-minute Animation about medicine-assisted psychotherapies far and wide!



- Attending our webinars, screenings and live events and bringing others along.

- Setting up and joining local Mind Medicine Australia Chapters.

- Connecting us with people and organisations within the medical fraternity, academia, government, regulatory agencies, philanthropy, and other relevant sectors.



- Reaching out to your local politicians, GPs and other health professionals.

- Spreading the word to your friends and networks and share our social media posts. You can follow us on Facebook, Instagram, Twitter and LinkedIn.



- Sharing the evidence for this treatment approach and contributing to scientific and open conversations.

- Keeping up to date with the latest news about Psychedelic Medicine by accessing information from Mind Medicine Australia's website and subscribing to our regular newsletter.



DR RICK DOBLIN (USA)
Executive Director of MAPS
(Multidisciplinary Association
for Psychedelic Studies)



PROFESSOR DAVID NUTT (UK)
Head of
Neuropsychopharmacology at
Imperial College London



DR GABOR MATÉ (CANADA)
Renowned Trauma and
Addiction Physician



JOHANN HARI (UK)
Journalist and
Bestselling Author



DR WILLIAM RICHARDS (USA)
Psychologist in the Center for
Psychedelic and Consciousness
Research



DR ROBIN CARHART-HARRIS (UK)
Head of the Centre for
Psychedelic Research at
Imperial College London



FRANÇOISE BOURZAT (USA)
Counselor and Author



DR WADE DAVIS CM (CANADA)
Professor of Anthropology & BC
Leadership Chair in Cultures and
Ecosystems at Risk at the
University of British Columbia



DR ALBERTO VILLOLDO (USA)
Founder the Four Winds Society,
Director the Center for Energy
Medicine (Chile)



DR BEN SESSA (UK)
Psychiatrist, Researcher
and Writer



DR GABBY AGIN-LIEBES (USA)
Psilocybin researcher
at Weill Institute for
Neuroscience



MATTHEW JOHNSON (USA)
Professor of Psychiatry and
Behavioural Sciences at Johns
Hopkins University School of
Medicine



DR LYNN MARIE MORKSI (USA)
President of the Psychedelic
Medicine Association



DR ADAM GAZZALEY (USA)
Founder & Executive Director
at Neuroscape



DR PATRYCJA SLAWUTA (USA)
Behavioural Scientist



DR ADELE LAFRANCE (USA)
Clinical Psychologist, Research
Scientist and Author



REID ROBISON (USA)
Psychiatrist with training in
Neurodevelopmental
Genetics & Clinical Research



DR KATE PATE (USA)
Neuropsychologist, Research
Scientist and Heroic Hearts
Project



SHLOMI RAZ (USA)
Chairman and CEO
of Eleusis



KELSEY RAMSDEN (CANADA)
Co-Founder, CEO & President
at Mindcure



HON ANDREW ROBB AO
Former Minister for Trade,
Investment and Tourism in
Australia



JOHN SKERRITT
Deputy Secretary, Health
Products Regulation
Group (TGA)



ARTHUR CHRISTOPOULOS
Professor of Analytical
Pharmacology and Molecular
Neuropsychopharmacologist



DR SIMON LONGSTAFF AO
Executive Director of The Ethics
Centre



ADMIRAL CHRIS BARRIE AC
Former Head of the
Australian Defence Force and
Strategic Leadership
Consultant



DR ELI KOTLER
Psychiatrist and Director of
Medicine at Malvern Private
Hospital



TANIA DE JONG AM
Founder Creative Universe,
Creativity Australia, Creative
Innovation Global and Mind
Medicine Australia



PETER HUNT AM
Investment Banker & Engaged
Philanthropist; Founder
Women's Community Shelters
and Mind Medicine Australia

BOOK YOUR TICKETS NOW AT:

SUMMIT.MINDMEDICINEAUSTRALIA.ORG



PSYCHOLOGICAL SUPPORT SERVICES

A safe and professional psychological service for those who want support regarding psychedelics, plant medicines, and their emotional health and wellbeing.

Our goal is to ensure that the Australian community has access to highly qualified and ethical allied health professionals so they can make safe and informed choices about their mental health in regard to psychedelics and plant medicines.

- Individual counselling
 - Via Skype or phone
 - Group Integration
- Professional Consultation
 - Training
 - Supervision
 - Bulk billing
 - Private health
 - NDIS

Contact us at:

psychologicalsupport@mindmedicineaustralia.org

Certificate in Psychedelic-Assisted Therapies

The Certificate in Psychedelic-Assisted Therapies (CPAT) has been developed primarily to meet the anticipated demand for trained therapists to provide regulatory-approved and research-backed psychedelic-assisted therapies for the treatment of mental ill-health in Australia. It is also expected that trained clinicians will be needed to work in research trials as they expand in Australia. We welcome applications from the following professionals:

- General, Counselling and Clinical Psychologists
- Psychiatrist and Medical Practitioners
- Occupational Therapists
- Social Workers
- Nurses
- Paramedics
- Registered Psychotherapists and Counsellors

Applications now open at:

cpat.mindmedicineaustralia.org



MIND MEDICINE
A U S T R A L I A



CONTACT US:

TEL. (03) 8679 6015

HELLO@MINDMEDICINEAUSTRALIA.ORG

WWW.MINDMEDICINEAUSTRALIA.ORG